

Hide Distant Edges Training

Hide Distant Edges_Training.zip



Hide Distant Edges - Overview

Work on the part with the red circle (1) following instructions by yourself.
The part with the black square (1) is an additional explanation or a reference.



Main Functions

- In partial views, hide lines, edges, and objects that exceed the specified depth based on normal vector direction
- Specify a base depth for a drawing to display the section view

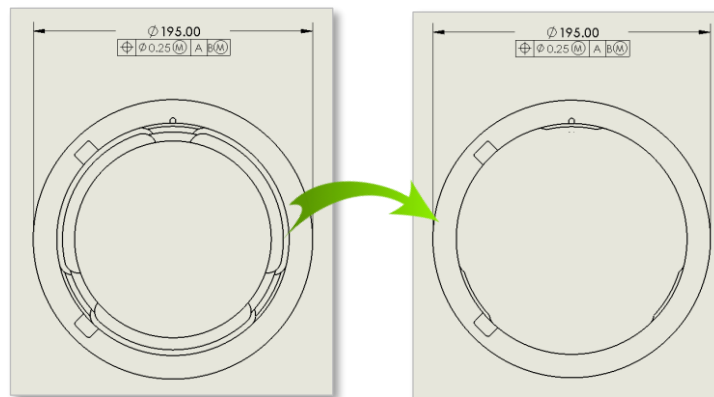
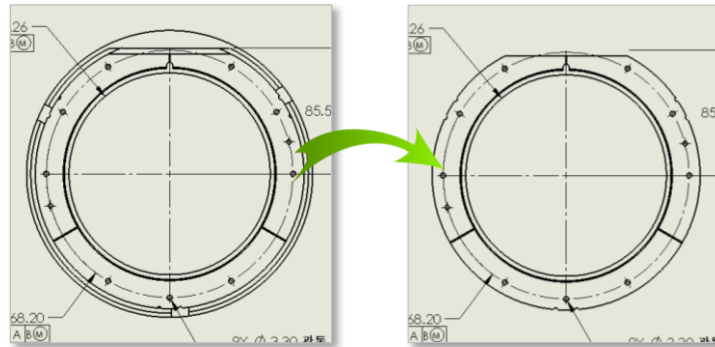
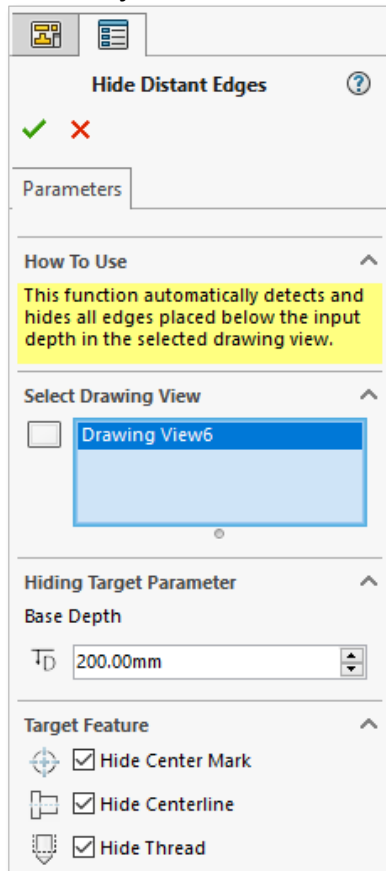


Benefits

- Automate repetitive tasks like selecting and hiding lines or edges one by one
- Provide the environments for better manufacturing process and communications by improving readability of a drawings



Course Objective: Follow instructions through the course and learn how to use Hide Distant Edges.



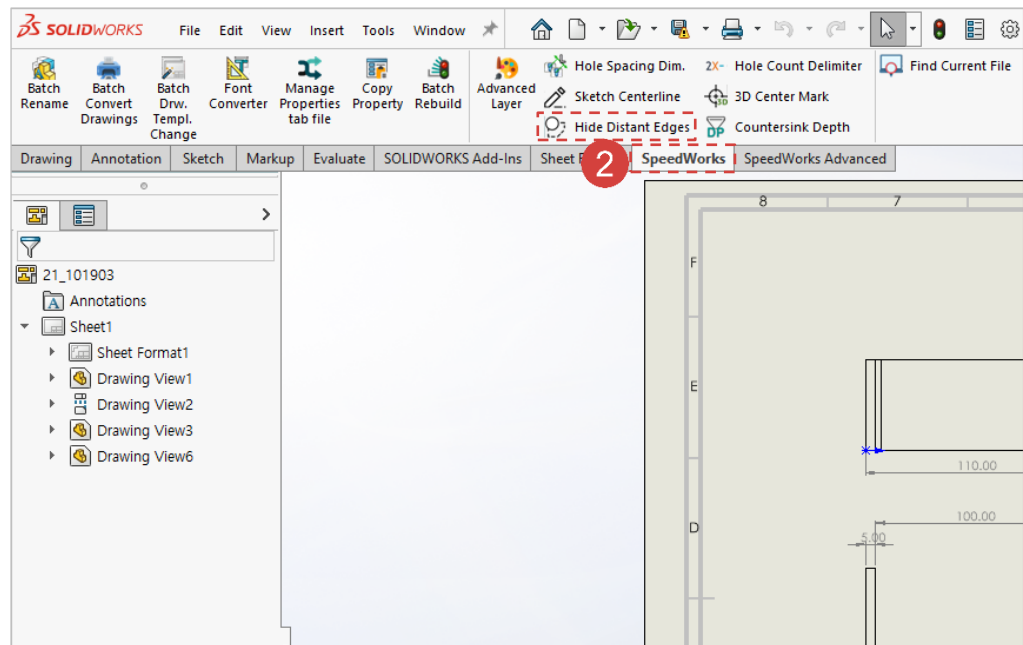
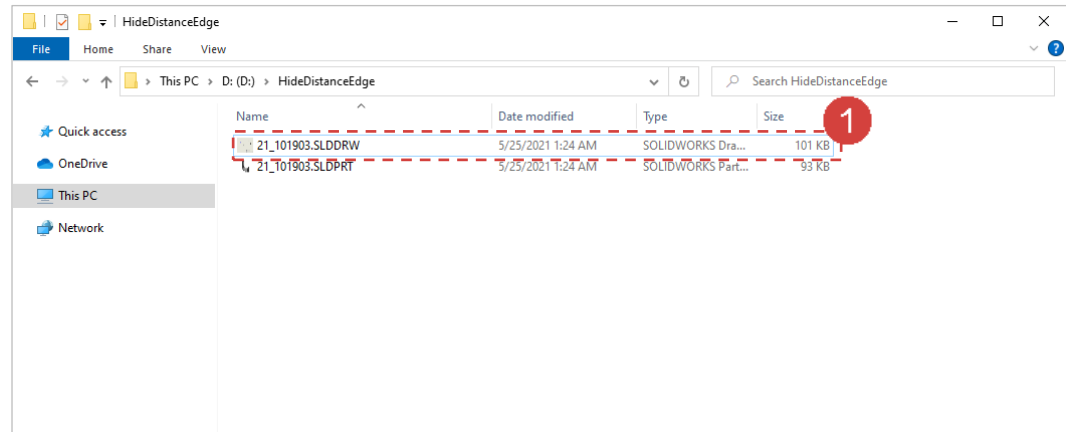
Hide Distant Edges - Execute

Work on the part with the red circle (1) following instructions by yourself.
The part with the black square (1) is an additional explanation or a reference.

1 Execute 21_101903.SLDDRW file among example files.

Click [SpeedWorks]tab - [Hide Distant Edges] to run

2 the tool.



※ You can download example files at Support page in SpeedWorks Homepage(<https://speedworks.info>).

Hide Distant Edges - Hide Distant Drawing Objects

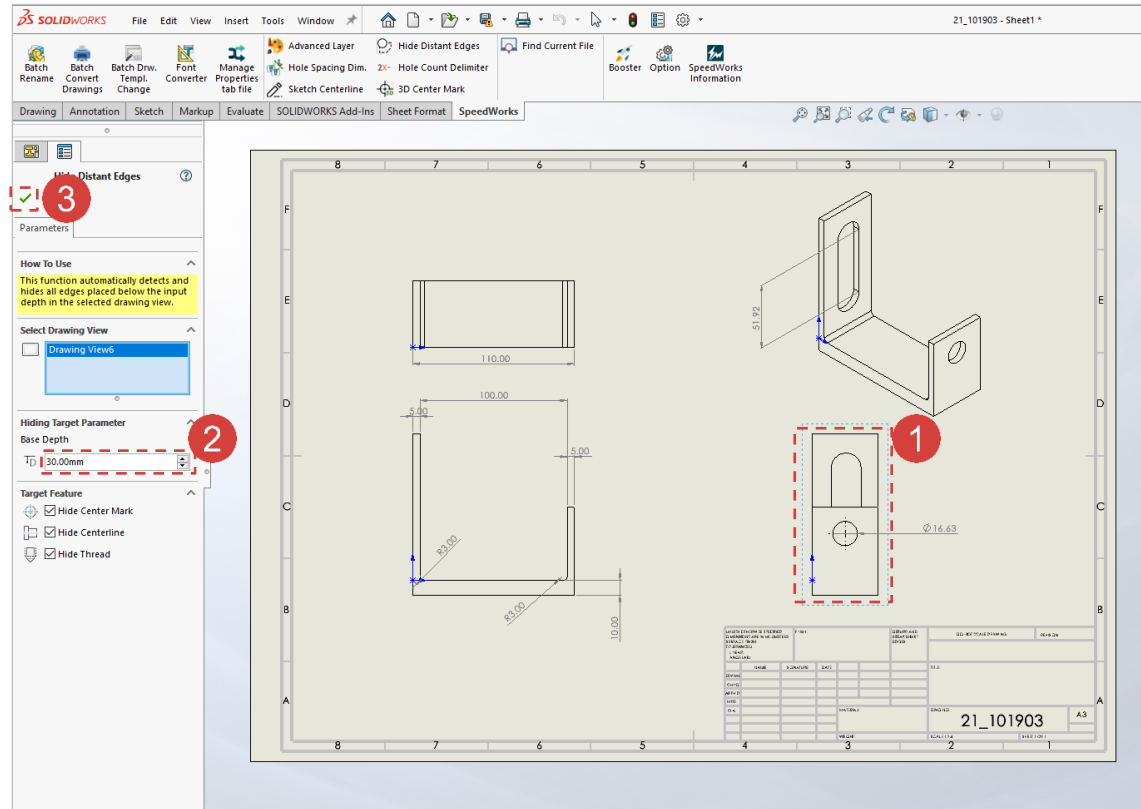
Work on the part with the red circle (1) following instructions by yourself.
The part with the black square (1) is an additional explanation or a reference.

1 Select and add **Drawing View6** at [Select Drawing View]. (See Figure)

2 Type '30mm' at [Base Depth].

-Hide all lines that are over 30mm away from the surface located at the front of the part in sight.

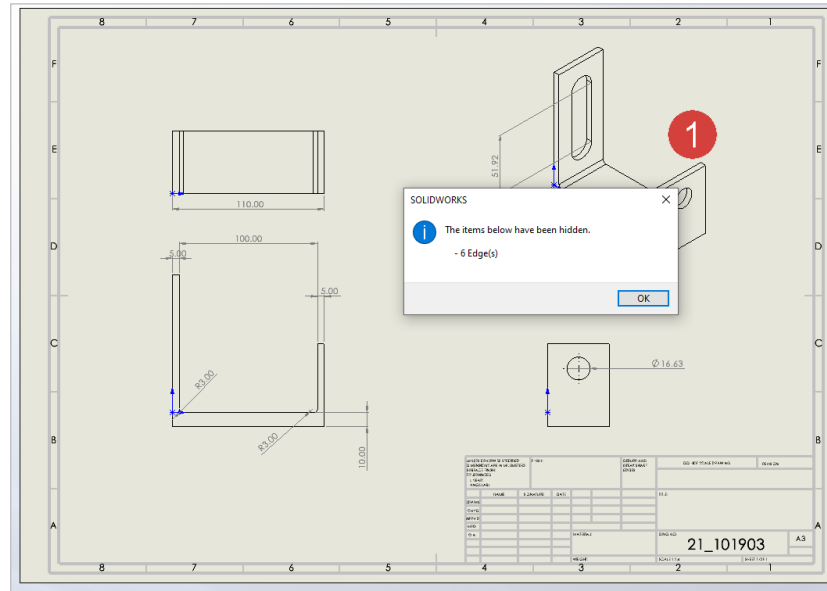
3 Click [OK] button.



Hide Distant Edges - Output Check

Work on the part with the red circle (1) following instructions by yourself.
The part with the black square (1) is an additional explanation or a reference.

1 Once edges are hidden successfully, a message window will be displayed. Click [OK] button.



1 The total depth is 110mm, and all lines over 30mm away from the surface located at the front of the part in sight has been disappeared.

